

PROJECT AREA - MEZZ LEVEL	
PHASE	AREA
PHASE 1	7856 SF
TOTAL AREA	7856 SF

TOTAL PROJECT AREA	
PHASE	AREA
PHASE 1	42086 SF
PHASE 2	13660 SF
TOTAL AREA	55745 SF

**PHASING LEGEND**

■ PHASE 1

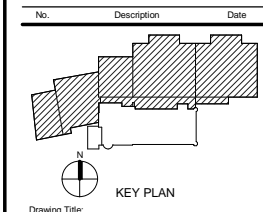
CONCEPT PRESENTATION - 2015 06 23

FAYETTE COUNTY  
BOARD OF  
COMMISSIONERS  
  
FAYETTE COUNTY  
PRISON

ASTORINO-CANNON DESIGN

227 Fort Pitt Boulevard  
Pittsburgh, Pennsylvania 15222  
T: 412.765.1700  
F: 412.765.1711

D.W. LASOTA ENGINEERING  
CIVIL ENGINEERING  
901 6TH AVENUE  
PATTON, PA 16868



**MEZZANINE LEVEL**

Project No.: 2014342.00 Checked by: Checker

**A3**